



---

---

---

---

---

---

---

---

## Open Access

---

Budapest Open Access Initiative

△ "An old tradition and a new technology have converged to make possible an unprecedented public good . . ."

– <http://www.soros.org/openaccess/read.shtml>

△ High principals to practicalities



---

---

---

---

---

---

---

---

## Open Access landscape

---

△ Open Access Journals

△ Open Access Repositories

△ Open Access - *definitions*

△ Data Providers and Service Providers

△ Repository networks



---

---

---

---

---

---

---

---

## Institutional repositories

- △ “Digital collections that preserve and provide access to the intellectual output of an institution.”\*
- △ Encouraging wider use of open access information assets
- △ May contain a variety of digital objects
  - e-prints,
  - theses,
  - e-learning objects,
  - datasets

\* Raym Crow The case for institutional repositories: a SPARC position paper. 2002.



---

---

---

---

---

---

---

---

## Repository content

- △ Preprints
  - △ Postprints
  - △ Datasets
  - △ Learning objects
  - △ Videos
  - △ Sound files
  - △ Theses
  - △ Dissertations
  - △ Royalty publications
  - △ Conference papers
  - △ Technical reports
  - △ Grey literature
- △ linkage between these objects



---

---

---

---

---

---

---

---

## Why institutional?

- △ The OAI-PMH allows a single gateway to search and access many repositories
  - subject-based portals or views
  - subject-based classification and search
  - institutional storage and support
- △ Practical reasons
  - use institutional infrastructure
  - integration into work-flows and systems
  - support is close to academic users and contributors



---

---

---

---

---

---

---

---

## Russell & 1994 Groups

- △ University of Bath
- △ Birkbeck
- △ University of Birmingham
- △ University of Bristol
- △ University of Cambridge
- △ Cardiff University
- △ University of Durham
- △ University of East Anglia
- △ University of Edinburgh
- △ University of Essex
- △ University of Exeter
- △ University of Glasgow
- △ Goldsmiths
- △ Imperial College
- △ King's College London
- △ Lancaster University
- △ University of Leeds
- △ University of Leicester
- △ University of Liverpool
- △ Loughborough University
- △ LSE
- △ University of Manchester
- △ University of Newcastle
- △ University of Nottingham
- △ University of Oxford
- △ Queen Mary
- △ Queen's University
- △ University of Reading
- △ Royal Holloway
- △ University of St Andrews
- △ University of Sheffield
- △ SOAS
- △ University of Southampton
- △ University of Surrey
- △ University of Sussex
- △ University of Warwick
- △ UCL
- △ University of York




---

---

---

---

---

---

---

---

---

---

---

---

### Institutional signatories by category

Category	Signatures
Rectors/principals of research organisations	95
Heads of university/research institution departments or schools	63
Research-based or research-centred charities/foundations	22
National or international research funding bodies	12
International societies or research-based organisations	47
National societies or research-based organisations	51
International or national library organisations	31
Institutional libraries	170
R&D-based companies	79
National ICT organisations	12
Museums (research-based)	5
National academies	8
Rectors' Conferences/University associations	6
Government departments	5
Publishers	36




---

---

---

---

---

---

---

---

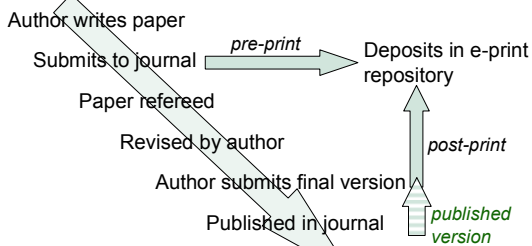
---

---

---

---

## publication & deposition




---

---

---

---

---

---

---

---

---

---

---

---

# Nottingham ePrints

- △ [Main page](#)
- △ [Computer Science Department](#)
- △ [Metadata](#)
- △ [Full-text](#)



---

---

---

---

---

---

---

---



---

---

---

---

---

---

---

---



---

---

---

---

---

---

---

---



---

---

---

---

---

---

---

---

---

---



---

---

---

---

---

---

---

---

---

---

## other Nottingham activity

- △ [Nottingham eTheses](#)
- △ [Nottingham eDissertations](#)
- △ [Nottingham School of Modern Languages Publications Archive](#)
  
- △ Developments from funding agency requirements
- △ Advocacy programme for academic involvement



---

---

---

---

---

---

---

---

---

---




---

---

---

---

---

---

---

---

---

---




---

---

---

---

---

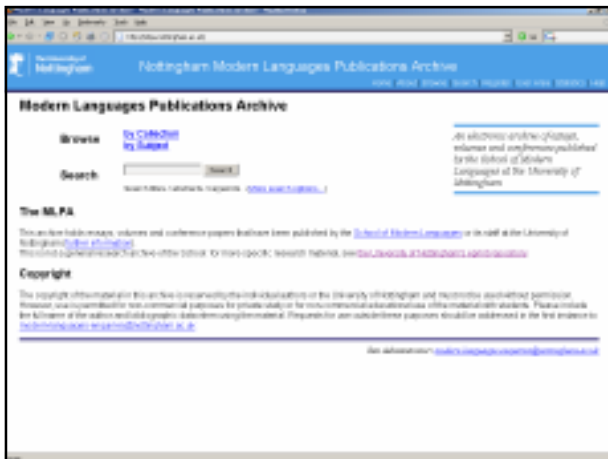
---

---

---

---

---




---

---

---

---

---

---

---

---

---

---

## SHERPA

---



---

---

---

---

---

---

---

---

## SHERPA Project

---

- △ Conceived in 2002
- △ Started work in April 2003
- △ Ended January 2006
  
- △ Went from 7 to 23 partner institutions
- △ Delivered additional 7 repositories, 6 months ahead of schedule
- △ Developed a "brand"



---

---

---

---

---

---

---

---

## SHERPA - continuation

---

- △ Partnership decided to keep working together
- △ Diverse membership means a good testing ground
- △ Individual institutions following own projects
- △ Have an email list, update service, website, partner meetings and internal professional networking
  
- △ Developed a portfolio of projects
- △ Managed transition from single funded project to working across multiple funding streams



---

---

---

---

---

---

---

---

## SHERPA - other projects

- △ SHERPA Plus
- △ OpenDOAR
- △ RoMEO
- △ JULIET
- △ SHERPA DP
- △ DRIVER
- △ Prospero/Depot
- △ Intute Repository Search
- △ Repository Support Project

- △ *Contributing to:*
- △ EThOS
- △ Copyright Knowledge Bank
- △ Institutional Repository Statistics
- △ DART-Europe
- △ RIOJA




---

---

---

---

---

---

---

---

## SHERPA today

- △ Active partnership of 33 institutions
- △ Respected voice in OA development
- △ International reputation
- △ Focus for bids and proposals for new work
- △ Requests for collaboration
- △ Source of information and advice
- △ Provides services seen as *"vital to OA infrastructure"*
- △ SparcEurope *"Award for Outstanding Achievements in Scholarly Communication"*




---

---

---

---

---

---

---

---

## SHERPA Partnership

- |                                    |  |                               |
|------------------------------------|--|-------------------------------|
| △ University of Nottingham (lead)  | △ London LEAP Consortium                               | △ Affiliate Partners          |
| △ University of Birmingham         | – Birkbeck College                                     | △ University of St Andrews    |
| △ University of Bristol            | – Goldsmiths College                                   | △ Brunel University           |
| △ University of Cambridge          | – Imperial College                                     | △ CCLRC                       |
| △ University of Durham             | – Institute of Cancer Research                         | △ Cranfield University        |
| △ University of Edinburgh          | – Kings College  | △ University of Leicester     |
| △ University of Glasgow            | – London School of Economics & Political Science (LSE) | △ University of Liverpool     |
| △ London LEAP Consortium           | – Queen Mary   | △ Sheffield Hallam University |
| △ University of Newcastle          | – Royal Holloway                                       | △ Trinity College Dublin      |
| △ University of Oxford             | – School of Advanced Study (SAS)                       |                               |
| △ White Rose Partnership           | – School of Oriental and African Studies (SOAS)        |                               |
| △ Arts and Humanities Data Service | – School of Pharmacy (SoP)                             |                               |
| △ The British Library              | – University College, London (UCL)                     |                               |
|                                    | △ White Rose Partnership                               |                               |
|                                    | – University of Leeds                                  |                               |
|                                    | – University of Sheffield                              |                               |
|                                    | – University of York                                   |                               |




---

---

---

---

---

---

---

---



## Some Examples . . .



---

---

---

---

---

---

---

---

## RoMEO

- △ [Home page](#)
- △ [Green publishers](#)
- △ [White publishers](#)
- △ [Statistics](#)



---

---

---

---

---

---

---

---

The screenshot shows the SHERPA RoMEO website interface. At the top, there is a navigation menu with links for Home, Green publishers, White publishers, and Statistics. Below the navigation, there is a search bar and a list of links. The footer contains the University of Edinburgh logo and copyright information.

---

---

---

---

---

---

---

---




---

---

---

---

---

---

---

---




---

---

---

---

---

---

---

---

## RoMEO Statistics

---

**Statistics for the 278 publishers on this list**

RoMEO colour	Archiving policy	Publishers	%
green	can archive pre-print and post-print	100	36
blue	can archive post-print (ie final draft post-refereeing)	72	26
yellow	can archive pre-print (ie pre-refereeing)	30	11
white	archiving not formally supported	76	27

Summary: **73%** of publishers on this list formally **allow** some form of self-archiving.

**CHERPA**

---

---

---

---

---

---

---

---



## OpenDOAR

- △ Quality-assured survey & service
- △ Search for repositories & browse by criteria
- △ Variety of output formats
- △ Search for content in repositories
- △ Policy tools and recommendations
- △ email service - filtered recipient list
- △ Statistics - filter repositories and generate pastable info.
- △ API - now released




---

---

---

---

---

---

---

---

---

---




---

---

---

---

---

---

---

---

---

---




---

---

---

---

---

---

---

---

---

---




---

---

---

---

---

---

---

---

---

---

---

---




---

---

---

---

---

---

---

---

---

---

---

---

## Search content

- △ [www.opendoar.org/search](http://www.opendoar.org/search)
- △ Example of a Google Custom Search Engine
- △ Searches the full-text of repositories as available
- △ Not seriously promoted
- △ Feedback very positive
- △ Identifies repository content clearly but Google may be preferred by institutional academics for reasons shared with all OA search services




---

---

---

---

---

---

---

---

---

---

---

---

## Policy Analysis

- △ OA future depends on service providers fulfilling the potential of OA material
- △ Services Providers depend on knowing what repositories lie within the scope of their service - and confidence in that information
- △ Services depend on having the correct permissions to be able to use OA material - repositories are rarely filled with *Open Access* material
- △ Therefore, policy information has to be available from the repositories . . .




---

---

---

---

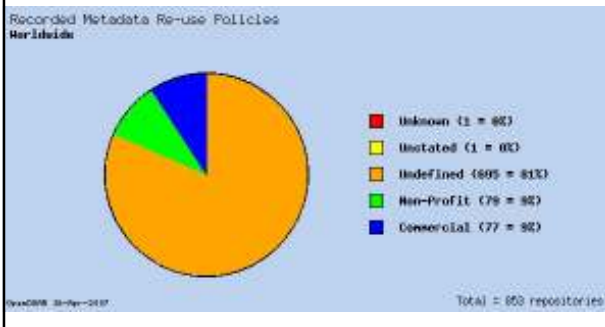
---

---

---

---

## Repositories' Metadata Policies




---

---

---

---

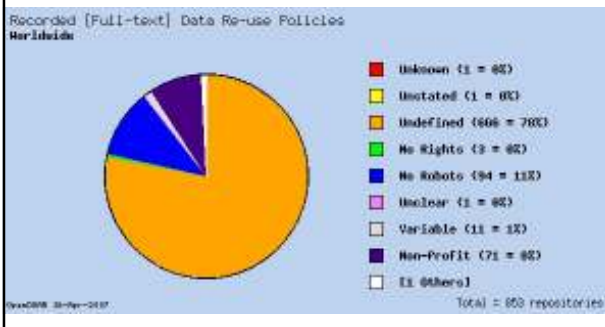
---

---

---

---

## Repositories' Full-text Policies




---

---

---

---

---

---

---

---






---

---

---

---

---

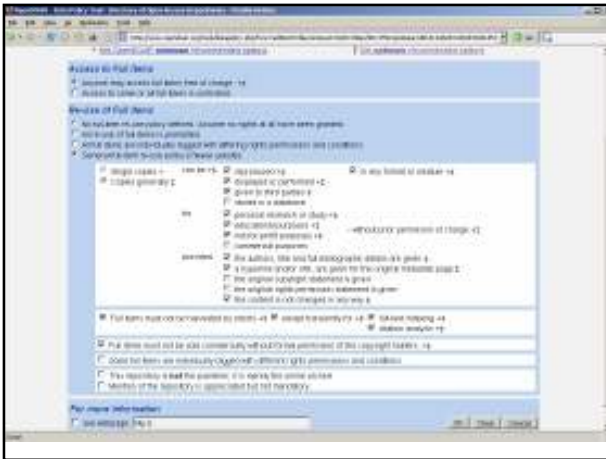
---

---

---

---

---




---

---

---

---

---

---

---

---


---

---

## DRIVER

---

- △ [Home page](#)
- △ [building repositories](#)
- △ [links](#)
- △ [wiki](#)
- △ [project site](#)



---

---

---

---

---

---

---

---

---

---






---

---

---

---

---

---

---

---

---

---

---

---




---

---

---

---

---

---

---

---

---

---

---

---




---

---

---

---

---

---

---

---

---

---

---

---



## The Depot

---

- △ "Keep-safe" repository
- △ [Home page](#)



---

---

---

---

---

---

---

---



---

---

---

---

---

---

---

---

## Intute Repository Search

---

- △ Developing value-added search features
- △ [Home page](#)



---

---

---

---

---

---

---

---



---

---

---

---

---

---

---

---

## SHERPA DP

---

- △ Preservation service
- △ Centralised *service* for *institutional* repositories
- △ May roll out nationwide in next phase



---

---

---

---

---

---

---

---

## RSP

---

- △ watch this space . . . .



---

---

---

---

---

---

---

---

## SHERPA - website

- △ [front page](#)
- △ [news page](#)
- △ [jobs page](#)
- △ [guidance page](#)
- △ [repositories and search page](#)
- △ [links page](#)
- △ [contacts](#)
- △ [speaking diary](#)
- △ [presentations](#)



---

---

---

---

---

---

---

---

---

---



---

---

---

---

---

---

---

---

---

---



---

---

---

---

---

---

---

---

---

---




---

---

---

---

---

---

---

---

---

---

---

---




---

---

---

---

---

---

---

---

---

---

---

---




---

---

---

---

---

---

---

---

---

---

---

---






---

---

---

---

---

---

---

---

---

---




---

---

---

---

---

---

---

---

---

---